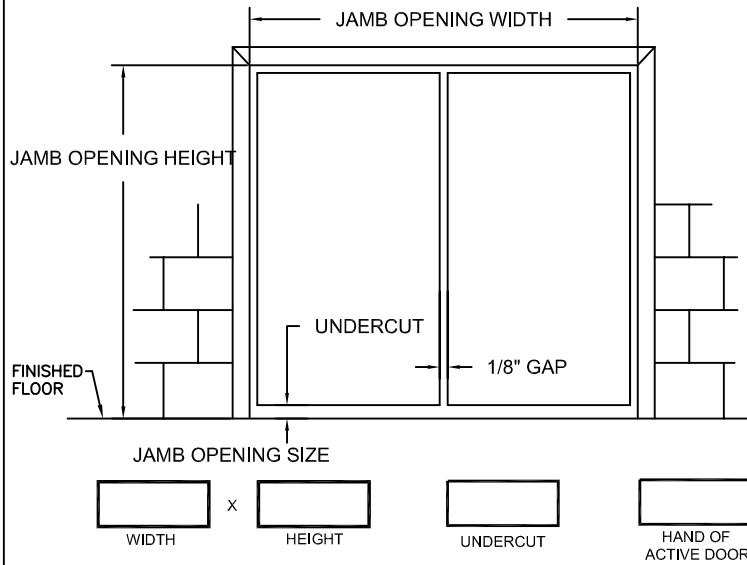


TIGER SERIES

- COMMERCIAL DUTY
- HEAVY DUTY
- EXTREME DUTY
- FIRE RATED
- 20 MIN 30 MIN 45 MIN
60 MIN 90 MIN
- WIND LOAD RATED
DESIGN PRESSURE _____ PSF
- BLAST LOAD RATED
DESIGN PRESSURE _____ PSF



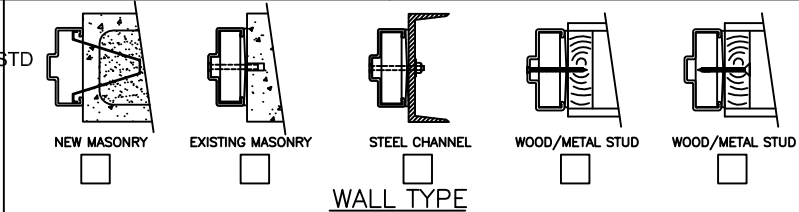
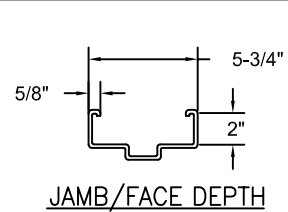
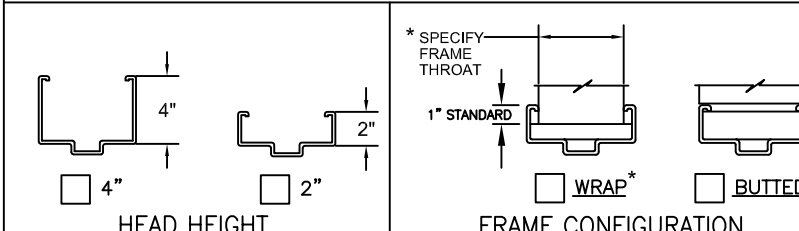
HARDWARE PREPARATIONS

- 4-1/2" MORTISE HINGES
 3 4 5
- 5" MORTISE HINGES
 3 4 5
- CONTINUOUS HINGE *
- CYLINDRICAL 161 LOCK
- CYLINDRICAL DEADBOLT
- MORTISE DEADLOCK *
- MORTISE 86 LOCK
- MORTISE EXIT DEVICE
- RIM EXIT DEVICE
- SVR EXIT DEVICE
- CVR EXIT DEVICE *
- CLOSER
- PUSH/PULL PLATES
- SURFACE OH HOLDER/STOP
- CONCEALED OH HOLDER/STOP *
- SURFACE DOOR BOTTOM
- CONCEALED DOOR BOTTOM *
- MANUAL FLUSH BOLTS
- AUTOMATIC FLUSH BOLTS *
(wood type for UL rated)
- FRP ASTRAGAL
Installed on INA leaf STD
- OTHER*

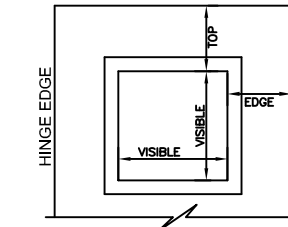
COLOR

- POLAR WHITE
- CASHEW TAN
- MIST GRAY
- PRIMER
- OTHER _____

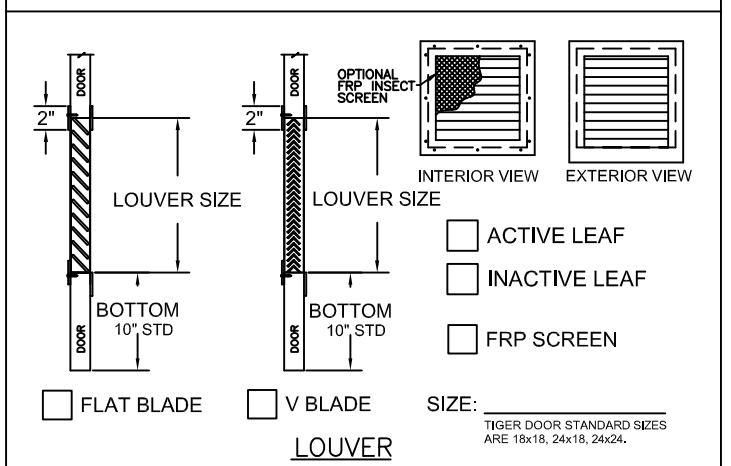
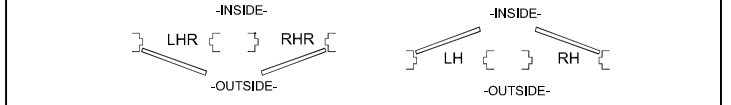
ROUGH OPENING: OVERALL FRAME PLUS 1/4" ALL AROUND TO ALLOW FOR FRAME SHIMS. TIGER DOOR STANDARD HARDWARE LOCATIONS WILL BE PROVIDED UNLESS CUSTOMER SPECIFIES OTHERWISE.



*MAKE & MODEL REQUIRED



- STANDARD 1/4" GLASS SIZES:**
- 8 x 30 (6-1/2 x 28-1/2 VISIBLE)
 - 12 x 12 (10-1/2 x 10-1/2 VISIBLE)
 - 24 x 24 (22-1/2 x 22-1/2 VISIBLE)
 - 24 x 30 (22-1/2 x 28-1/2 VISIBLE)
- GLAZING TYPE AND THICKNESS:**
- 1/4" TEMPERED
 - 1/4" WIRE
 - 1/4" LEXAN
 - CUTOUT ONLY (NO KIT)
 - OTHER _____
- GLAZING:**
- BY TIGER DOOR
 - BY OTHERS
 - ACTIVE LEAF
 - INACTIVE LEAF
- VISION LIGHT**



1181 Garden Street
Greensburg, PA 15601
PH. 888-891-4416
PH. 724-834-7300
FAX 724-830-2871

CUSTOMER NOTES: _____

www.tigerdoor.com

DOUBLE DOOR AND FRAME

CUSTOMER: _____

PROJECT: _____

DOOR MARK: _____