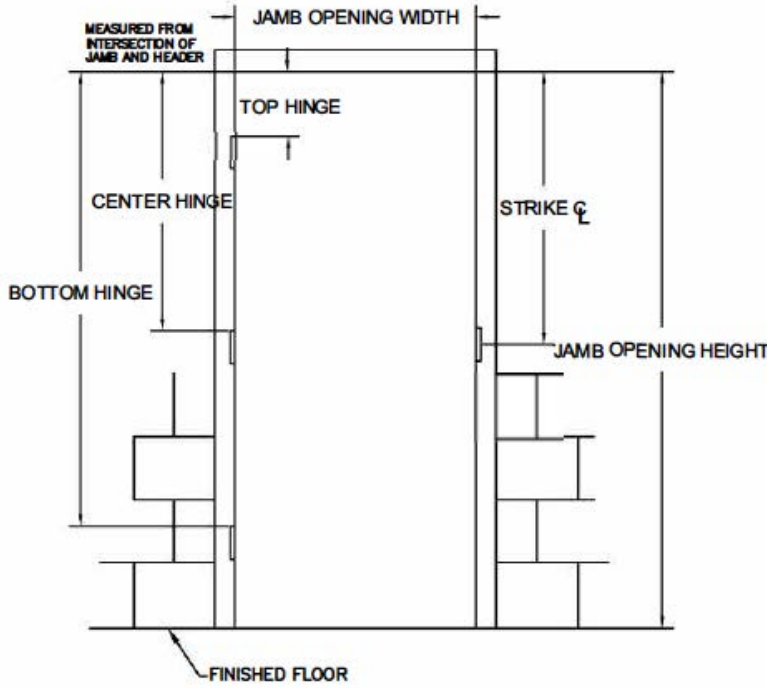


**TIGER DOOR
SINGLE FRAME ONLY
ORDER FORM**

HEAVY DUTY
EXTREME DUTY
FIRE RATED
20 MIN ___ 30 MIN ___ 45 MIN ___
60 MIN ___ 90 MIN ___

WIND LOAD RATED
DESIGN PRESSURE: PSF



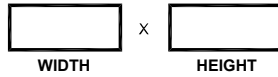
HARDWARE PREPARATIONS

- 4-1/2" MORTISE HINGES
- # OF HINGES: 3 4 5
- STD WEIGHT
- HEAVY WEIGHT
- 5" MORTISE HINGES
- # OF HINGES: 3 4 5
- STD WEIGHT
- HEAVY WEIGHT
- CONTINUOUS HINGE REINFORCEMENT
- 4-7/8" ANSI STRIKE PREP
- DEADBOLT STRIKE PREP
- RIM SURFACE STRIKE REINFORCEMENT
- CLOSER REINFORCEMENT RA/PA
- SURFACE OH HOLDER/STOP REINFORCEMENT
- CONCEALED OH HOLDER/STOP REINFORCEMENT
- OTHER
- NOTES:

COLOR

- POLAR WHITE
- CASHEW TAN
- MIST GRAY
- PRIMER, FOR FIELD PAINTING
- OTHER

JAMB OPENING SIZE



HAND OF FRAME
(LIST ACTIVE)

MEASURED FROM INTERSECTION OF JAMB & HEADER



TOP HINGE



CTR. HINGE(S)



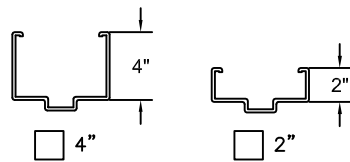
BTM. HINGE

ROUGH OPENING: OVERALL FRAME PLUS 1/4" ALL AROUND TO ALLOW FOR FRAME SHIMS.

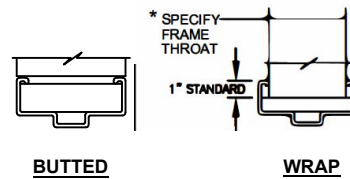
CUSTOMER NOTES:

* All colors have a semi-gloss finish

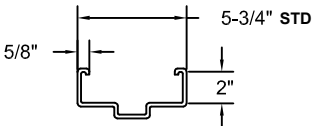
HEAD HEIGHT



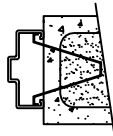
FRAME CONFIGURATION



JAMB / FACE DEPTH

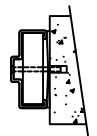


WALL TYPE



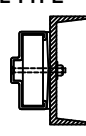
NEW MASONRY

WIRE ANCHORS
T ANCHORS



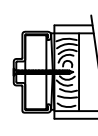
EXISTING MASONRY

CRETEFLEX
#14-10 x 4" FPH SS
SLEEVE ANCHOR
3/8" x 5" FHSLV SS



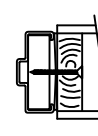
STEEL CHANNEL

SS MACHINE BOLT
3/8" x 4" WITH NUT & WASHER



WOOD/METAL STUD

SS SCREW
#14 x 4" FLAT HEAD SMS

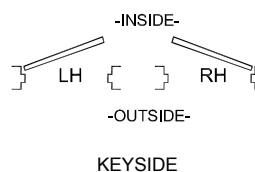
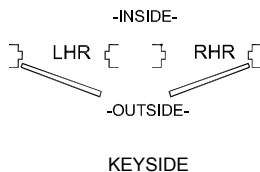


WOOD/METAL STUD

SS SCREW
#14 x 3" FLAT HEAD SMS



5224 FM 802 Brownsville, TX
78521 P: 800.891.4416
tigersales@tigerdoor.com
www.tigerdoor.com



TD SINGLE FRAME ONLY

CUSTOMER:

PROJECT:

DOOR MARK: