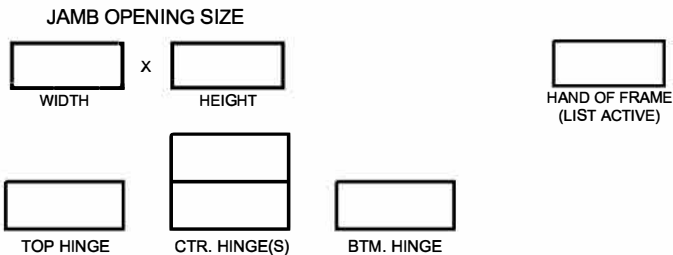
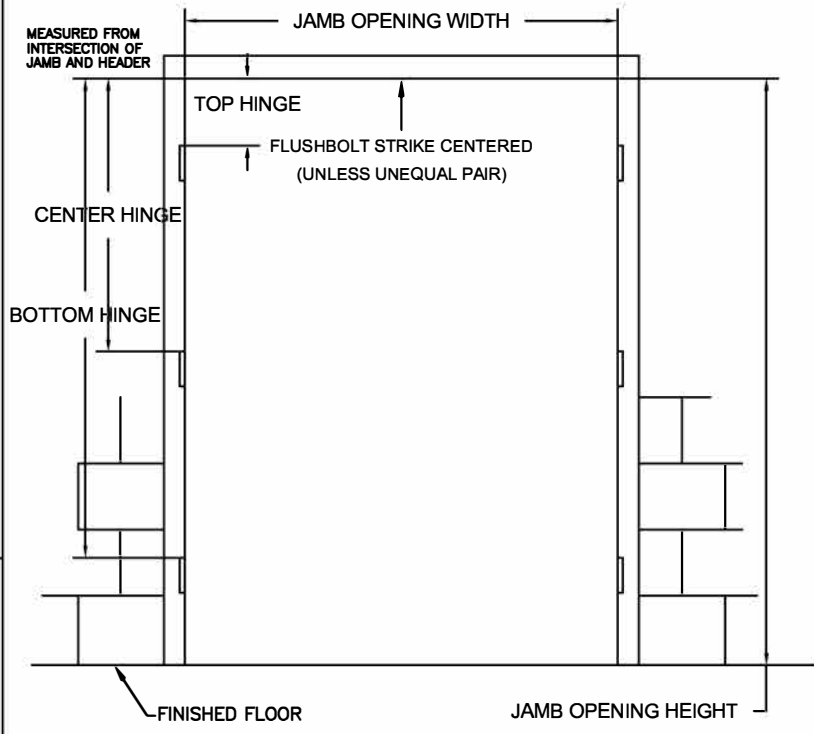


**TIGER SERIES**

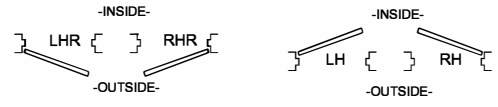
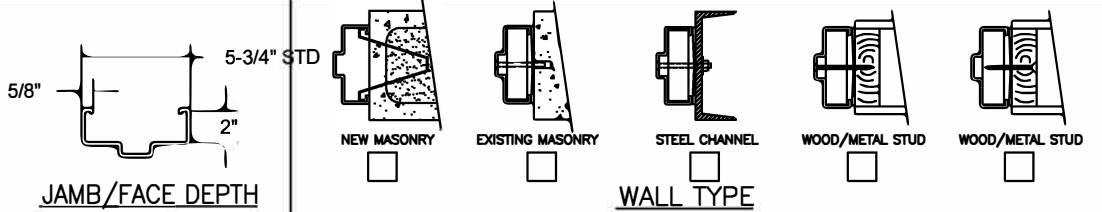
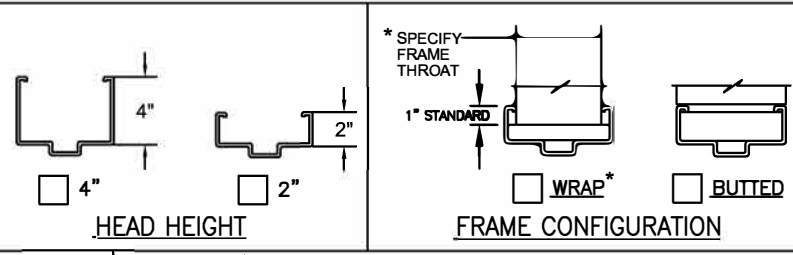
- COMMERCIAL DUTY
- HEAVY DUTY
- EXTREME DUTY
- FIRE RATED
- 20 MIN \_\_\_ 30 MIN \_\_\_ 45 MIN \_\_\_  
60 MIN \_\_\_ 90 MIN \_\_\_
- WIND LOAD RATED  
DESIGN PRESSURE \_\_\_ PSF
- BLAST LOAD RATED  
DESIGN PRESSURE \_\_\_ PSF

**COLOR**

- POLAR WHITE
- CASHEW TAN
- MIST GRAY
- PRIMER
- OTHER \_\_\_\_\_



ROUGH OPENING:  
OVERALL FRAME PLUS 1/4" ALL AROUND TO ALLOW FOR FRAME SHIMS.



**HARDWARE PREPARATIONS**

- 4-1/2" MORTISE HINGES  
 3  4  5
- 5" MORTISE HINGES  
 3  4  5
- CONTINUOUS HINGE \*
- FLUSHBOLT STRIKE
- CLOSER
- SURFACE OH HOLDER/STOP
- CONCEALED OH HOLDER/STOP\*
- OTHER \*

\*MAKE & MODEL REQUIRED

5224 FM 802 Brownsville, TX 78521  
P: 888.891.4416  
E: TigerSales@tigerdoor.com  
W: www.tigerdoor.com

CUSTOMER NOTES: \_\_\_\_\_  
\_\_\_\_\_  
\_\_\_\_\_  
\_\_\_\_\_

**DOUBLE FRAME ONLY**

CUSTOMER: \_\_\_\_\_  
PROJECT: \_\_\_\_\_  
DOOR MARK: \_\_\_\_\_