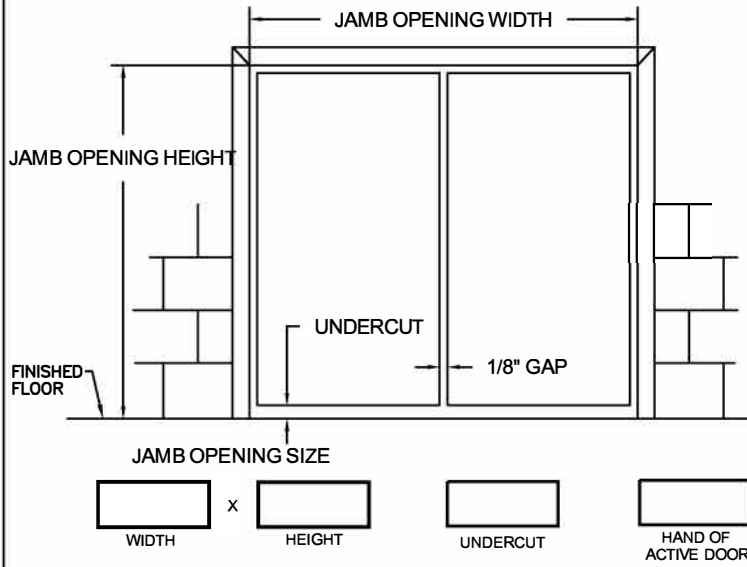


**TIGER SERIES**

- COMMERCIAL DUTY
- HEAVY DUTY
- EXTREME DUTY
- FIRE RATED
- 20 MIN  30 MIN  45 MIN
- 60 MIN  90 MIN
- WIND LOAD RATED
- DESIGN PRESSURE \_\_\_\_\_ PSF
- BLAST LOAD RATED
- DESIGN PRESSURE \_\_\_\_\_ PSF



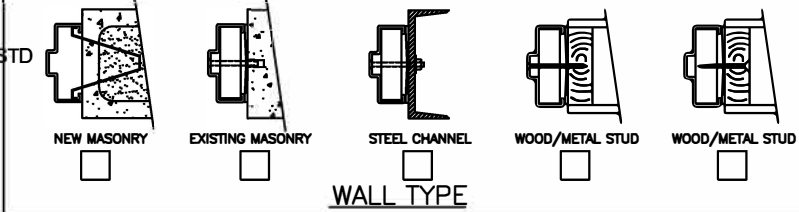
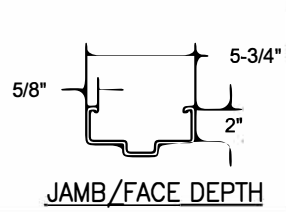
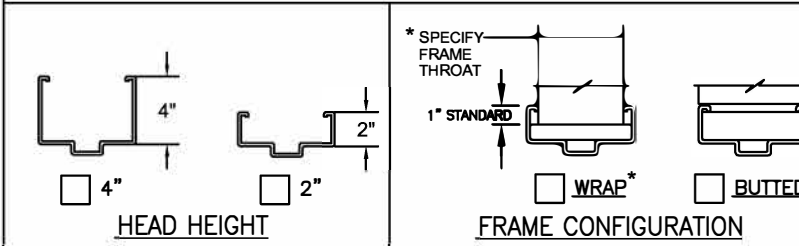
**HARDWARE PREPARATIONS**

- 4-1/2" MORTISE HINGES
  - 3  4  5
- 5" MORTISE HINGES
  - 3  4  5
- CONTINUOUS HINGE \*
- CYLINDRICAL 161 LOCK
- CYLINDRICAL DEADBOLT
- MORTISE DEADLOCK \*
- MORTISE 86 LOCK
- MORTISE EXIT DEVICE
- RIM EXIT DEVICE
- SVR EXIT DEVICE
- CVR EXIT DEVICE \*
- CLOSER
- PUSH/PULL PLATES
- SURFACE OH HOLDER/STOP
- CONCEALED OH HOLDER/STOP \*
- SURFACE DOOR BOTTOM
- CONCEALED DOOR BOTTOM \*
- MANUAL FLUSH BOLTS
- AUTOMATIC FLUSH BOLTS \* (wood type for UL rated)
- FRP ASTRAGAL Installed on INA leaf STD
- OTHER\*

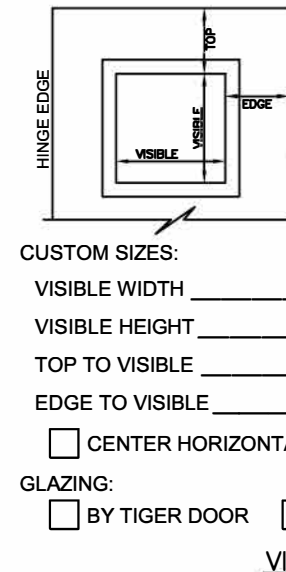
**COLOR**

- POLAR WHITE
- CASHEW TAN
- MIST GRAY
- PRIMER
- OTHER \_\_\_\_\_

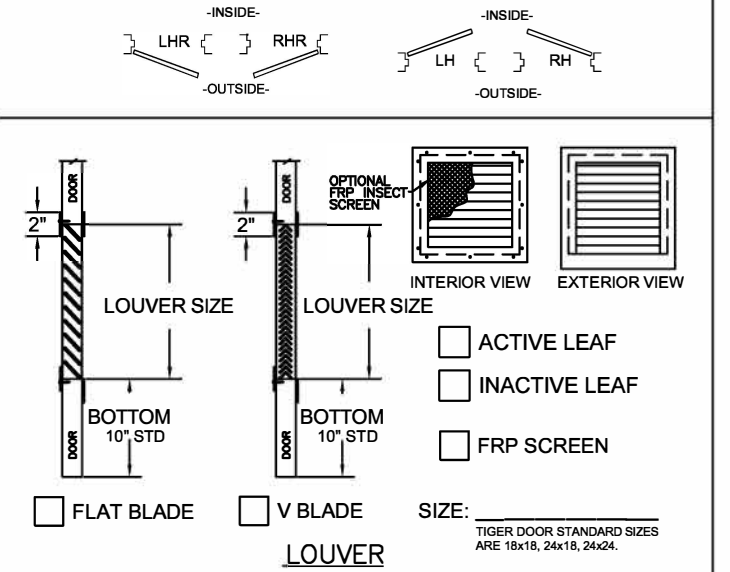
ROUGH OPENING: OVERALL FRAME PLUS 1/4" ALL AROUND TO ALLOW FOR FRAME SHIMS. TIGER DOOR STANDARD HARDWARE LOCATIONS WILL BE PROVIDED UNLESS CUSTOMER SPECIFIES OTHERWISE.



\*MAKE & MODEL REQUIRED



- STANDARD 1/4" GLASS SIZES:**
- 8 x 30 (6-1/2 x 28-1/2 VISIBLE)
  - 12 x 12 (10-1/2 x 10-1/2 VISIBLE)
  - 24 x 24 (22-1/2 x 22-1/2 VISIBLE)
  - 24 x 30 (22-1/2 x 28-1/2 VISIBLE)
- GLAZING TYPE AND THICKNESS:**
- 1/4" TEMPERED
  - 1/4" WIRE
  - 1/4" LEXAN
  - CUTOUT ONLY (NO KIT)
  - OTHER \_\_\_\_\_
- VISION LIGHT**



5224 FM 802 Brownsville, TX 78521  
 P: 888.891.4416  
 E: TigerSales@tigerdoor.com  
 W: www.tigerdoor.com

CUSTOMER NOTES: \_\_\_\_\_  
 \_\_\_\_\_  
 \_\_\_\_\_  
 \_\_\_\_\_

**DOUBLE DOOR AND FRAME**

CUSTOMER: \_\_\_\_\_  
 PROJECT: \_\_\_\_\_  
 DOOR MARK: \_\_\_\_\_