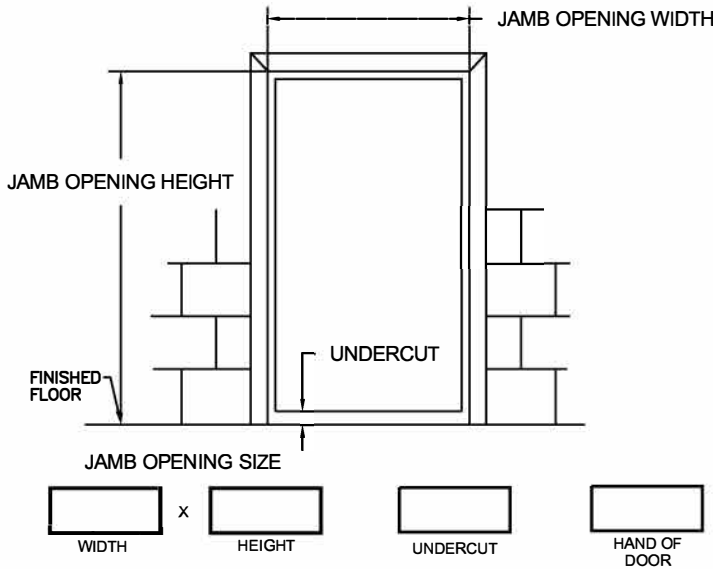


**TIGER SERIES**

- COMMERCIAL DUTY
- HEAVY DUTY
- EXTREME DUTY
- FIRE RATED
- 20 MIN \_\_\_\_ 30 MIN \_\_\_\_ 45 MIN \_\_\_\_  
60 MIN \_\_\_\_ 90 MIN \_\_\_\_
- WIND LOAD RATED  
DESIGN PRESSURE \_\_\_\_ PSF
- BLAST LOAD RATED  
DESIGN PRESSURE \_\_\_\_ PSF



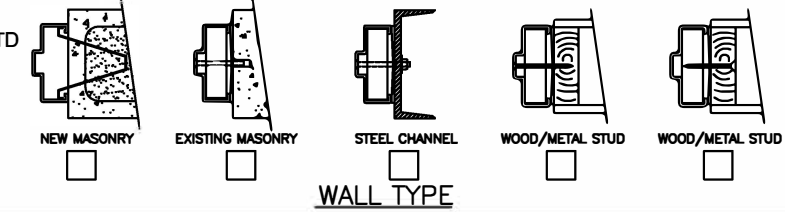
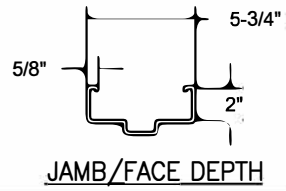
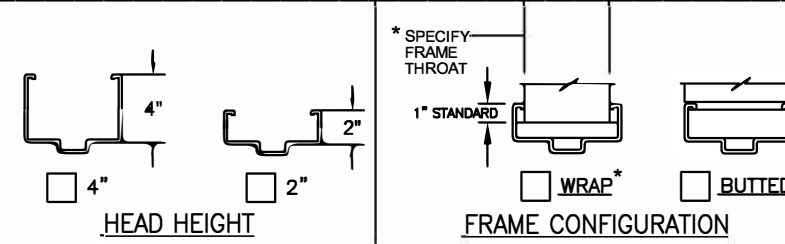
**HARDWARE PREPARATIONS**

- 4-1/2" MORTISE HINGES  
 3  4  5
- 5" MORTISE HINGES  
 3  4  5
- CONTINUOUS HINGE \*
- CYLINDRICAL 161 LOCK
- CYLINDRICAL DEADBOLT
- MORTISE DEADLOCK \*
- MORTISE 86 LOCK
- MORTISE EXIT DEVICE
- RIM EXIT DEVICE
- SVR EXIT DEVICE
- CVR EXIT DEVICE \*
- CLOSER
- PUSH/PULL PLATES
- SURFACE OH HOLDER/STOP
- CONCEALED OH HOLDER/STOP \*
- SURFACE DOOR BOTTOM
- CONCEALED DOOR BOTTOM \*
- OTHER \*

**COLOR**

- POLAR WHITE
- CASHEW TAN
- MIST GRAY
- PRIMER
- OTHER \_\_\_\_\_

ROUGH OPENING: OVERALL FRAME PLUS 1/4" ALL AROUND TO ALLOW FOR FRAME SHIMS. TIGER DOOR STANDARD HARDWARE LOCATIONS WILL BE PROVIDED UNLESS CUSTOMER SPECIFIES OTHERWISE.

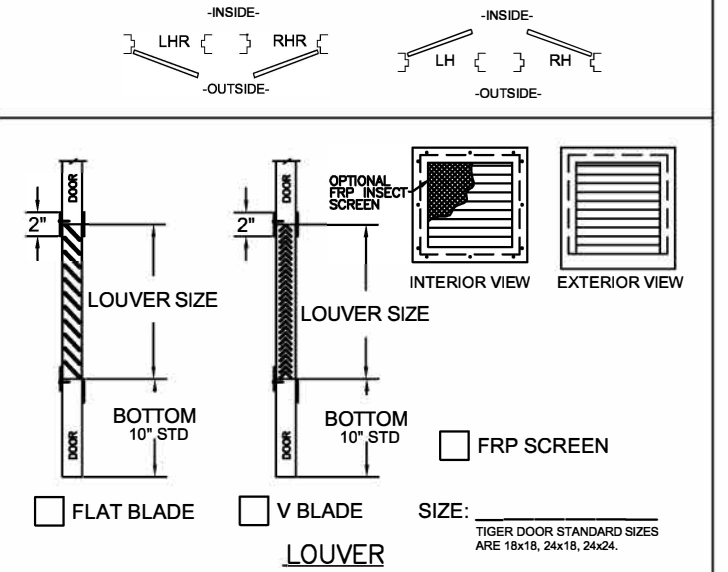


\*MAKE & MODEL REQUIRED

**CUSTOM SIZES:**  
 VISIBLE WIDTH \_\_\_\_\_  
 VISIBLE HEIGHT \_\_\_\_\_  
 TOP TO VISIBLE \_\_\_\_\_  
 EDGE TO VISIBLE \_\_\_\_\_  
 CENTER HORIZONTALLY

**GLAZING:**  
 BY TIGER DOOR  BY OTHERS

- STANDARD 1/4" GLASS SIZES:**
- 8 x 30 (6-1/2 x 28-1/2 VISIBLE)
  - 12 x 12 (10-1/2 x 10-1/2 VISIBLE)
  - 24 x 24 (22-1/2 x 22-1/2 VISIBLE)
  - 24 x 30 (22-1/2 x 28-1/2 VISIBLE)
- GLAZING TYPE AND THICKNESS:**
- 1/4" TEMPERED
  - 1/4" WIRE
  - 1/4" LEXAN
  - CUTOUT ONLY (NO KIT)
  - OTHER \_\_\_\_\_
- VISION LIGHT**



5224 FM 802 Brownsville, TX 78521  
 P: 888.891.4416  
 E: TigerSales@tigerdoor.com  
 W: www.tigerdoor.com

**CUSTOMER NOTES:** \_\_\_\_\_  
 \_\_\_\_\_  
 \_\_\_\_\_

www.tigerdoor.com

**SINGLE DOOR AND FRAME**

CUSTOMER: \_\_\_\_\_  
 PROJECT: \_\_\_\_\_  
 DOOR MARK: \_\_\_\_\_