

**STANDARD SIZES:**

- 8 x 30 (6-1/2 x 28-1/2 VISIBLE)
- 12 x 12 (10-1/2 x 10-1/2 VISIBLE)
- 24 x 24 (22-1/2 x 22-1/2 VISIBLE)
- 24 x 30 (22-1/2 x 28-1/2 VISIBLE)

**GLAZING TYPE AND THICKNESS:**

- 1/4" TEMPERED
- 1/4" WIRE
- 1/4" LEXAN
- CUTOUT ONLY (NO KIT)
- OTHER \_\_\_\_\_

**CUSTOM SIZES:**

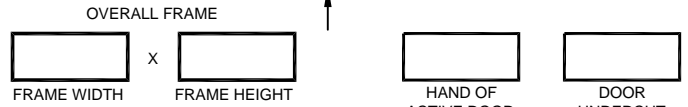
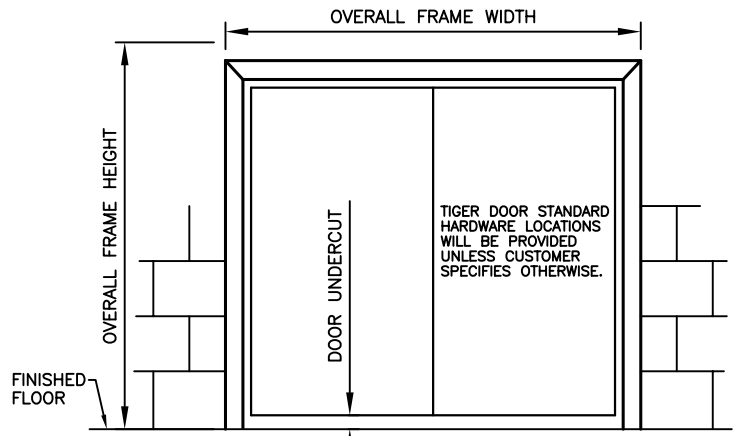
VISIBLE WIDTH \_\_\_\_\_  
 VISIBLE HEIGHT \_\_\_\_\_  
 TOP TO VISIBLE \_\_\_\_\_  
 EDGE TO VISIBLE \_\_\_\_\_

CENTER HORIZONTALLY

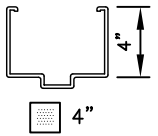
**GLAZING:**

- BY TIGER DOOR
- BY OTHERS
- ACTIVE LEAF
- INACTIVE LEAF

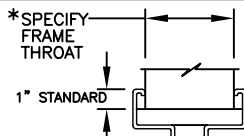
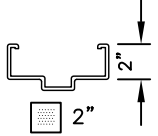
**DOOR WINDOW**



ROUGH OPENING = OVERALL FRAME PLUS 1/4" ALL AROUND TO ALLOW FOR FRAME SHIMS.

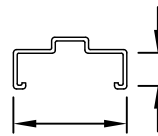


**HEAD HEIGHT**



**FRAME CONFIGURATION**

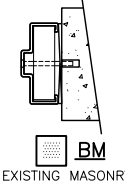
- WRAP\*
- BUTTED



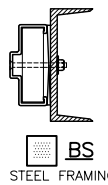
**JAMB/FACE DEPTH**



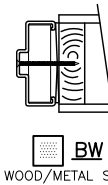
**GWA**  
NEW MASONRY



**BM**  
EXISTING MASONRY



**BS**  
STEEL FRAMING



**BW**  
WOOD/METAL STUD

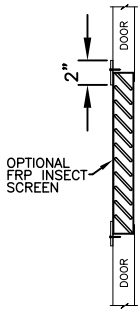
**WALL TYPE**

**COLOR:**

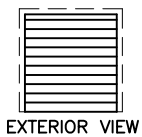
- POLAR WHITE
- CASHEW TAN
- OTHER \_\_\_\_\_
- MIST GRAY

- FRP ASTRAGAL
- FLAT (NON FIRE RATED)
- ANGLE (FIRE RATED)
- 4-1/2" MORTISE HINGES
  - 3
  - 4
  - 5
- 5" MORTISE HINGES
  - 3
  - 4
  - 5
- CONTINUOUS HINGE

- MAKE AND MODEL REQUIRED
- CYLINDRICAL 161 LOCK
- CYLINDRICAL DEADBOLT
- MORTISE DEADLOCK
- MORTISE 86 LOCK
- MORTISE EXIT DEVICE
- RIM EXIT DEVICE
- SVR EXIT DEVICE
- CVR EXIT DEVICE



FLAT BLADE



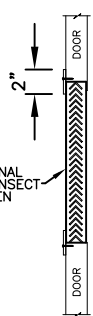
EXTERIOR VIEW



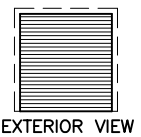
INTERIOR VIEW

FRP SCREEN

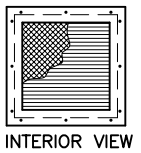
**LOUVERS**



V BLADE



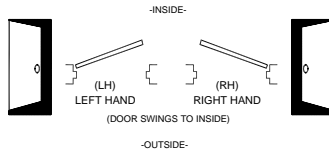
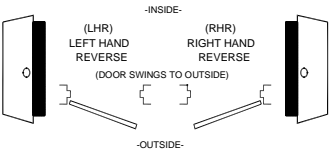
EXTERIOR VIEW



INTERIOR VIEW

SIZE: \_\_\_\_\_  
 TIGER DOOR STANDARD SIZES ARE 18x18, 24x18, 24x24.

SIZE: \_\_\_\_\_  
 TIGER DOOR STANDARD SIZES ARE 18x18, 24x18, 24x24.



ALWAYS VIEW DOOR FROM EXTERIOR OR EXIT SIDE WHEN DETERMINING HANDING. FOR DOUBLE DOORS, GIVE HAND OF ACTIVE LEAF. (RHR ACT OR RHRA)

**HANDING**

- MEDIUM DUTY
- HEAVY DUTY
- EXTREME DUTY

- FIRE RATED
- 20 MIN \_\_\_\_\_ 30 MIN \_\_\_\_\_ 45 MIN \_\_\_\_\_
- 60 MIN \_\_\_\_\_ 90 MIN \_\_\_\_\_

- WIND LOAD RATED
- WIND SPEED \_\_\_\_\_

- BLAST LOAD RATED
- DESIGN PRESSURE \_\_\_\_\_

**PERFORMANCE RATING**

- MANUAL FLUSH BOLTS
  - WOOD
  - METAL 12"
  - METAL 24"
- AUTOMATIC FLUSH BOLTS
  - WOOD
  - METAL 12"
  - METAL 24"
- CLOSER
- PUSH/PULL PLATES
- FLUSH PULL
- SURFACE OH HOLDER/STOP
- CONCEALED OH HOLDER/STOP
- SURFACE DOOR BOTTOM
- CONCEALED DOOR BOTTOM
- OTHER: \_\_\_\_\_

**HARDWARE REQUIRED**



TIGER DOOR LLC  
 1802 IZARD ST.  
 OMAHA, NE. 68012  
 PH. 888-891-4416  
 PH. 402-346-4344  
 FAX 402-346-0561

**CUSTOMER NOTES:**

\_\_\_\_\_  
 \_\_\_\_\_  
 \_\_\_\_\_

**DOUBLE DOOR AND FRAME DATA SHEET**

CUSTOMER: \_\_\_\_\_

PROJECT: \_\_\_\_\_

DOOR MARK: \_\_\_\_\_